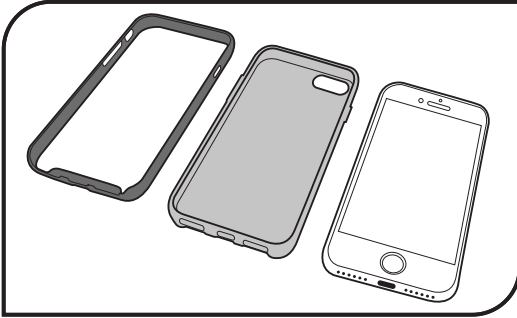


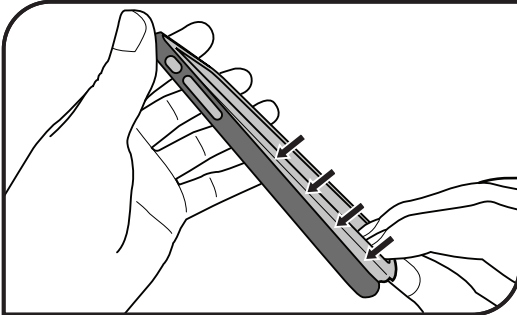
INSTRUCTION MANUAL

XDesign Inception
Protective Case for iPhone 7 / 7 Plus

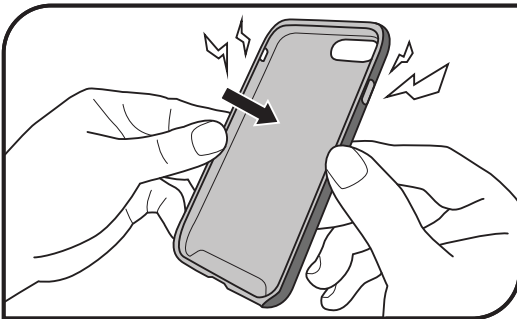
ASSEMBLE



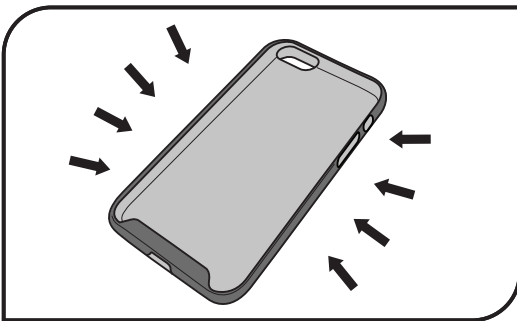
1. The Inception Case for iPhone 7/7 Plus is made up of two parts: a TPU body with a hard backplate and a PC bumper.



2. Apply the PC bumper onto the TPU body in the same way as shown in the image.

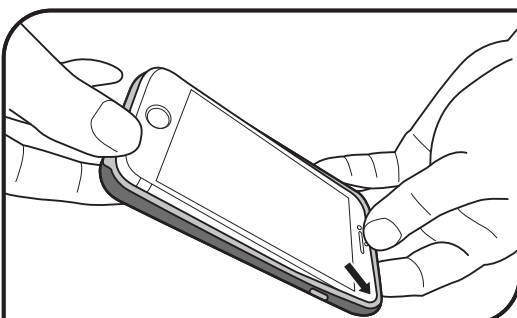


3. Snap PC bumper onto TPU body.

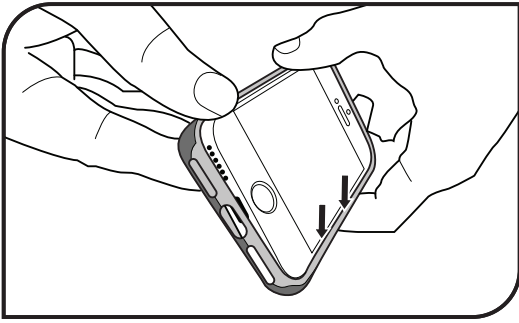


4. Ensure all the buttons and ports are aligned.

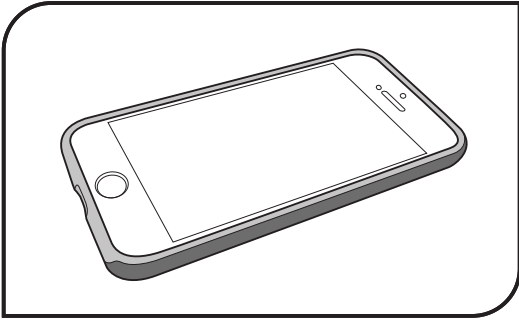
INSTALLATION



1. Starting from the top right hand corner, install the iPhone into the case.



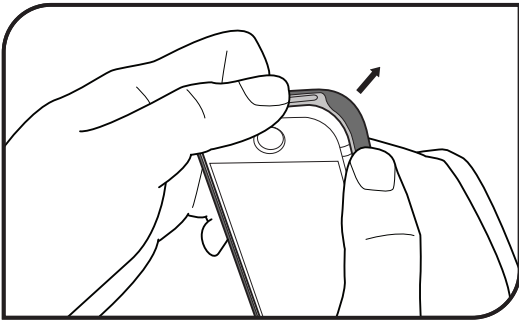
2. Begin to push the left side of the iPhone into the case.



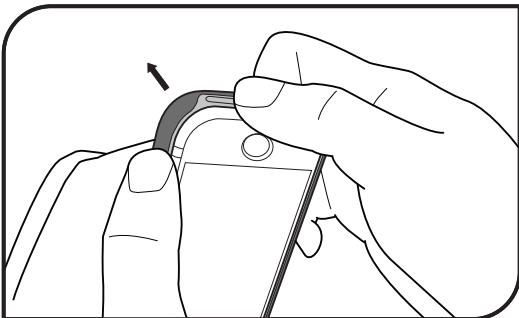
3. Ensure the iPhone is snug in the case.

REMOVAL

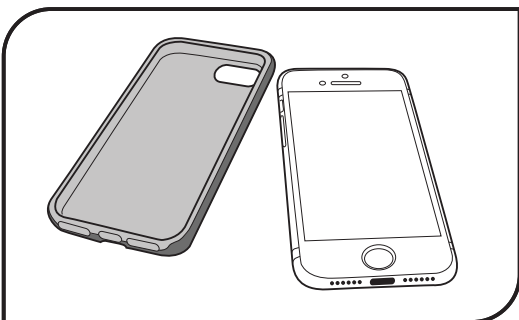
(Ensure that you complete the removal on a soft surface, such as your bed)



1. Push the bottom corner of the case off of the iPhone.



2. Slowly pop off the other corner on the other side.



3. Carefully remove the case off of your iPhone.